
What's New

Strato version 1.6.0.0



auditdata 
Your Partner in Audiology Solutions

Table of Contents

1. INTRODUCTION.....	2
2. SYSTEM WIDE ENHANCEMENTS.....	2
2.1 IMPORTING NOAH DATABASES IN OFFLINE MODE	2
3. GLOBAL SETTINGS	2
3.1 CLIENT CUSTOM FIELDS	2
4. ADMINISTRATION	4
4.1 CUSTOMIZABLE TEMPLATES	4
5. EXPLORE.....	5
5.1 NEW FILTERS FOR CLIENT EXPLORE.....	5
6. SUPPORT	5

1. Introduction

The purpose of this document is to give you an overview of the new features in Strato 1.6.0.0.

The available languages are English, Danish, and Swedish. This version supports NOAH version 4.4.

2. System Wide Enhancements

2.1 Handling Strato in Offline Mode

For those users who need to work with Strato in the offline mode, the import/export functionality has been improved to operate in a smoother way.

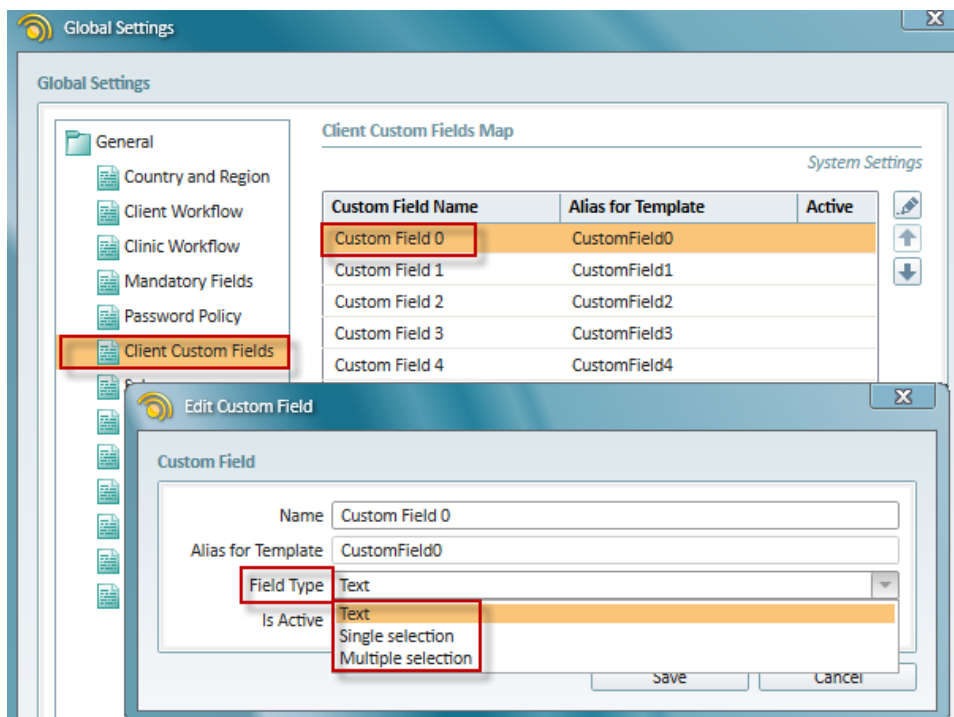
For more information on working in the offline mode, please refer to the “How to use Strato Offline” document.

3. Global Settings

3.1 Client Custom Fields

Custom fields can now be created with three field types: Text (text only), Single selection (one option to be selected), and Multiple selection (a few options can be selected).

To create a custom field, go to **Tools > Global Settings > Client Custom Fields**, select any Custom Field from the list and click **Edit** to specify the field type:



What's New in Strato 1.6.0.0

For a single or multiple selection, you may add as many values as you want.

The image shows two overlapping windows from the Strato 1.6.0.0 software. The top window, titled 'Edit Custom Field', contains the following fields: 'Name' (Custom Field 0), 'Alias for Template' (CustomField0), 'Field Type' (Single selection, highlighted with a red box), and 'Is Active' (checked). A 'Purge Data' button is also present. The bottom window, titled 'Edit custom dictionary value', contains a 'Value' field (333, highlighted with a red box) and an 'Active' checkbox (checked). Both windows have 'Save' and 'Cancel' buttons at the bottom.

Custom Field Values Table:

Value	Active
111	✓
222	✓

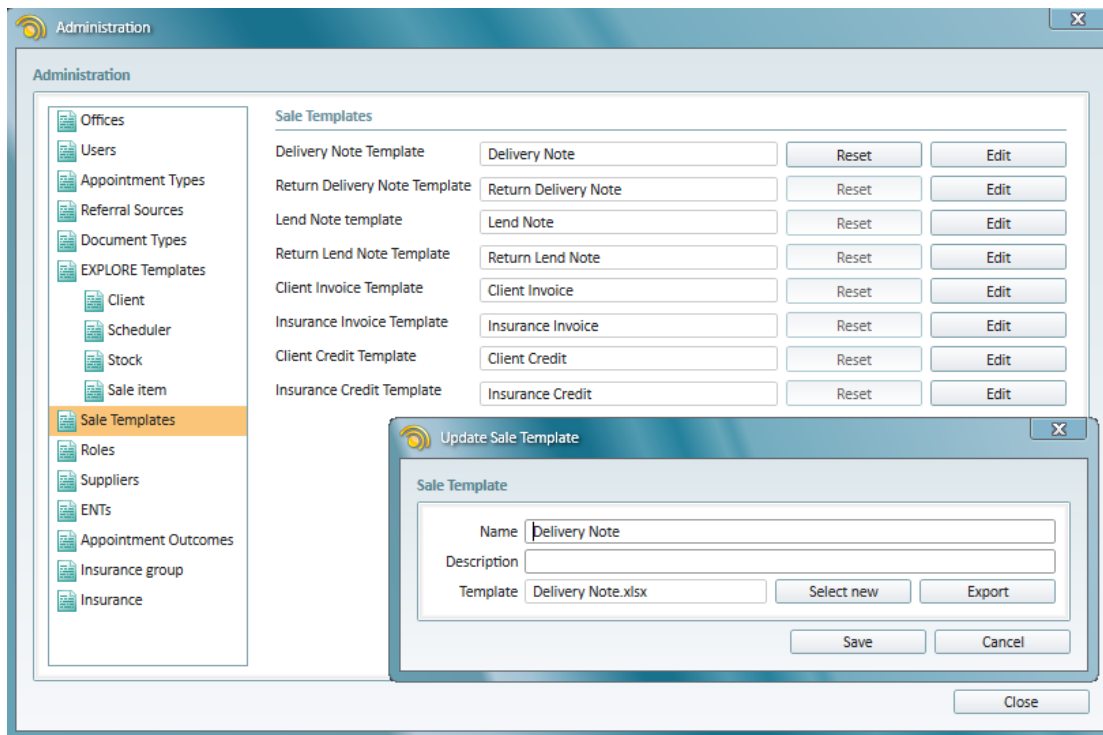
The values of this field type will also appear in the filters for the **Client EXPLORE** module.

Note: After changing a field type, the data from the old type will be removed from all clients' records and you have to specify the values of this new field type for every client.

4. Administration

4.1 Customizable Templates

New templates have been added at **Administration > EXPLORE Templates** and **Administration > Sale Templates**.

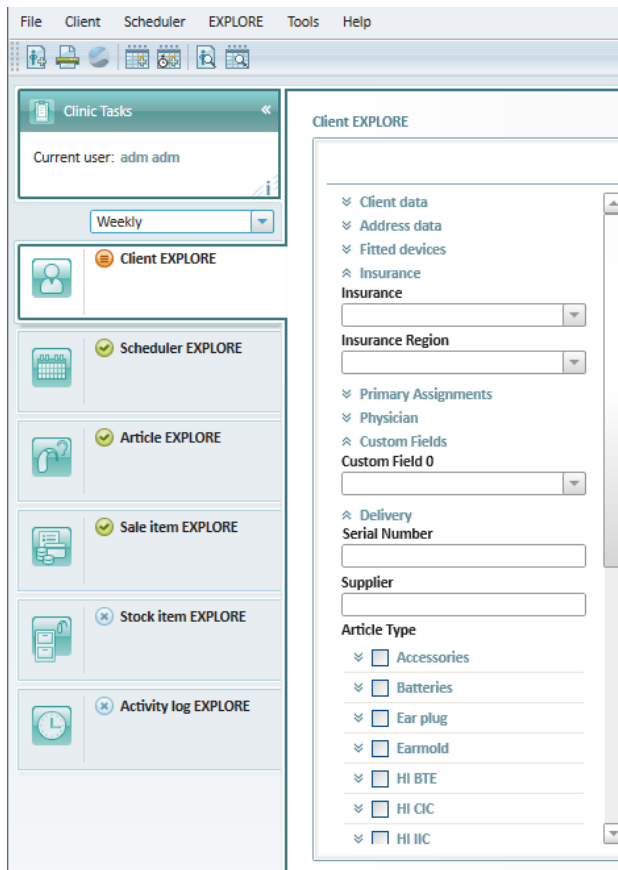


It is possible to export the templates into an Excel or a Word format and customize them according to your needs (i.e. add your company logo or change a layout). The templates can be used for both internal and external purposes.

5. EXPLORE

5.1 New Filters for Client EXPLORE

With the new search filters that were added to the **Client EXPLORE** module, you can have more accurate search results.



6. Support

For further information, please visit www.auditdata.com.